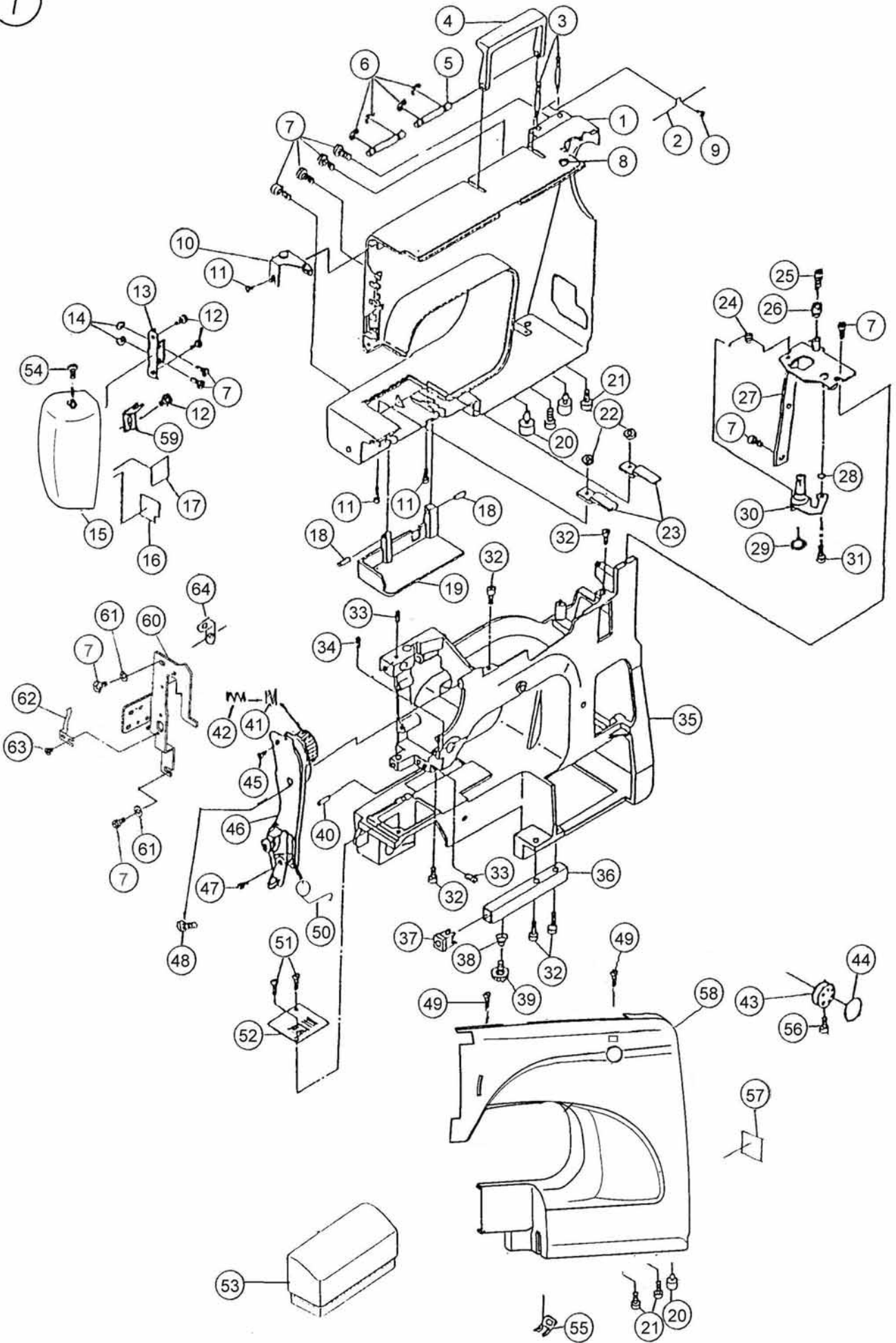


零件圖
PARTS LIST

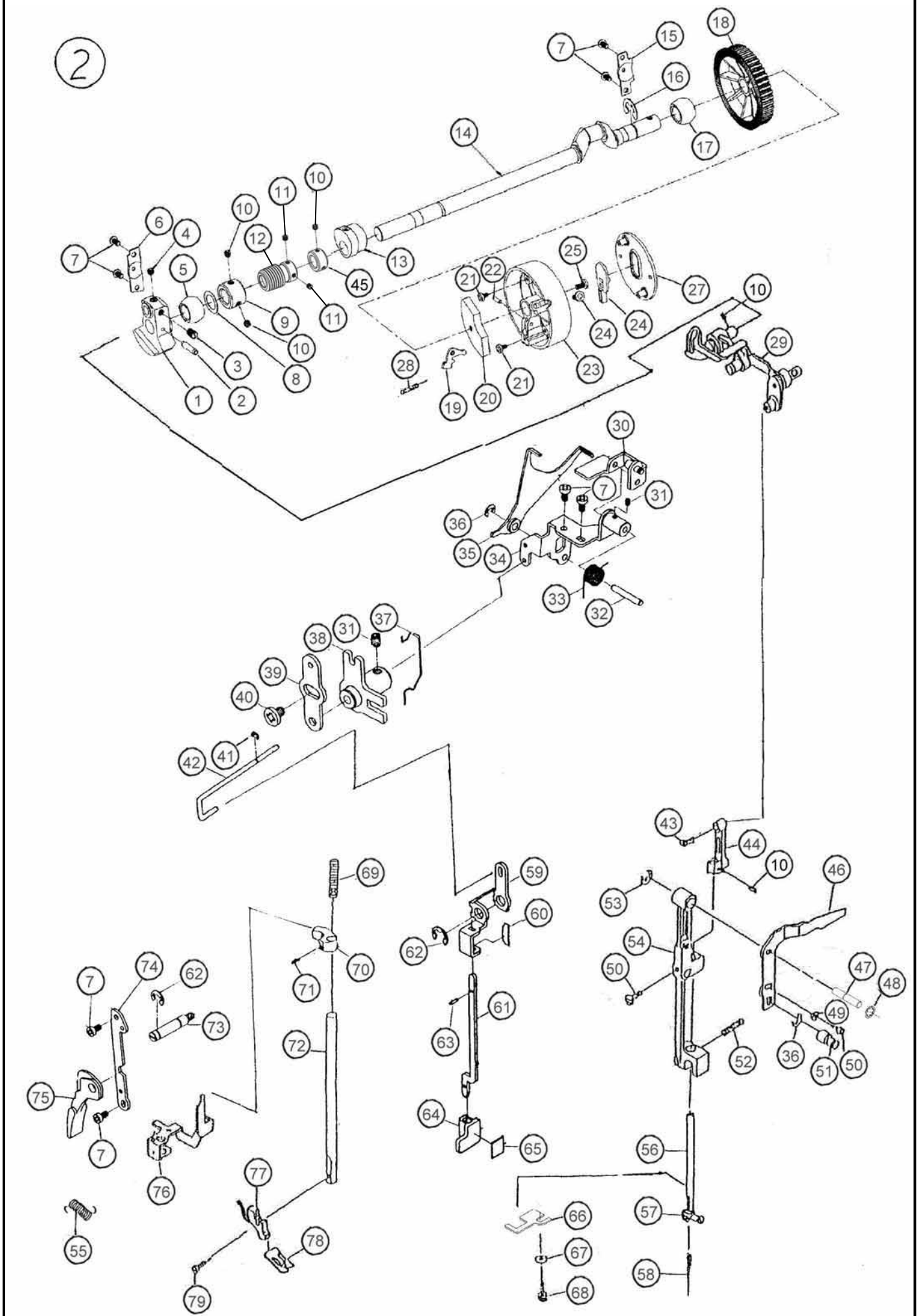


1



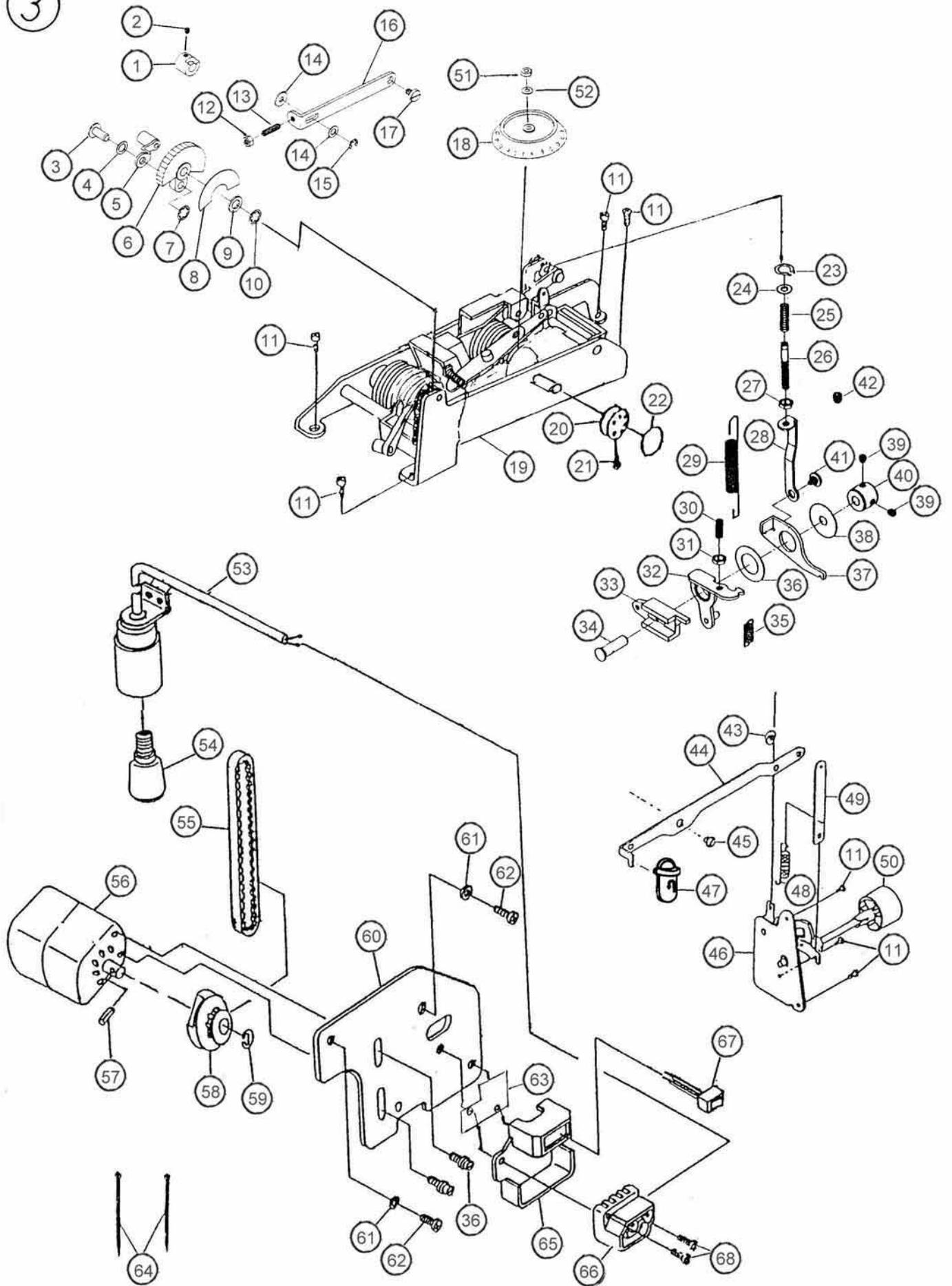
ref no.	part no.	name of parts
01	271103000	REAR COVER (DRAWING → 270002108-4)
02	270007000	SPOOL PIN SPRING
03	301027005	SPOOL PIN A1
04	353004122	HANDLE
05	270174009	HANDLE PIN
06	000000103	SNAP RING 3D
07	301008000	SET SCREW
08	250125014	ADJUSTING HOLE PLUG (W)
09	000011923	SET SCREW
10	230502006	THREAD GUIDE COMP
11	301016001	SET SCREW
12	000011912	SET SCREW
13	380502004	FACE PLATE HINGE
14	301193003	NUT
15	270306002	FACE PLATE (DRAWING → 270306507)
16	270092105	HEAT-SHIELD PLATE
17	250083101	HEAT-SHIELD PLATE
18	000003405	SPRING PIN 3*18
19	250031023	SHUTTLE RACE COVER (W)
20	250020007	RUBBER
21	356017002	SET SCREW
22	301151009	NUT
23	250032002	SHUTTLE RACE COVER SPRING PLATE
24	250045008	BOBBIN WINDER SPRING C
25	353128008	SET SCREW
26	380067002	BOBBIN WINDER STOPPER
27	250016000	BOBBIN WINDER SUPPORTING PLATE
28	370069003	WASHER 5.1*18 t=0.5
29	353030002	RUBBER RING
30	360501001	BOBBIN WINDER COMP
31	353125005	HINGED SCREW
32	250087002	SET SCREW
33	301046000	SET SCREW
34	301087003	SET SCREW
35	250507003	ARM/BED
36	250022021	AID LEG (W)
37	250025024	AID LEG PLUG (W)
38	250024001	SPRING
39	250023000	ADJUSTING FOOT
40	250013007	LEAD SHAFT
41	230140002	TENSION SPRING
42	754036003	SPRING
43	260027027	SELECT DIAL
44	xxxxxxxxxx	SELECT DIAL INDICATED PLATE
45	355026001	SET SCREW
46	270644304	UPPER TENSION COMP.
47	260035006	SET SCREW
48	301008000	SET SCREW
49	301008000	SET SCREW
50	230008007	TENSION CHECK SPRING
51	301261003	SET SCREW
52	250006007	NEEDLE PLATE
53	270640104	EXTENSION COVER
54	301185105	SET SCREW
55	353049004	PANEL FIXATION
56	370048006	HINGED SCREW
57	xxxxxxxxxx	RATING PLATE
58	270337xxx	FRONT COVER (DRAWING)
59	370221005	FACE PLATE FIXING PLATE B
60	270224108	CORD SUPPORTER
61	301257006	WAVE WASHER
62	270171006	BUTTONHOLE SPRING
63	000016009	SET SCREW
64	370220004	FACE PLATE FIXING PLATE A

2



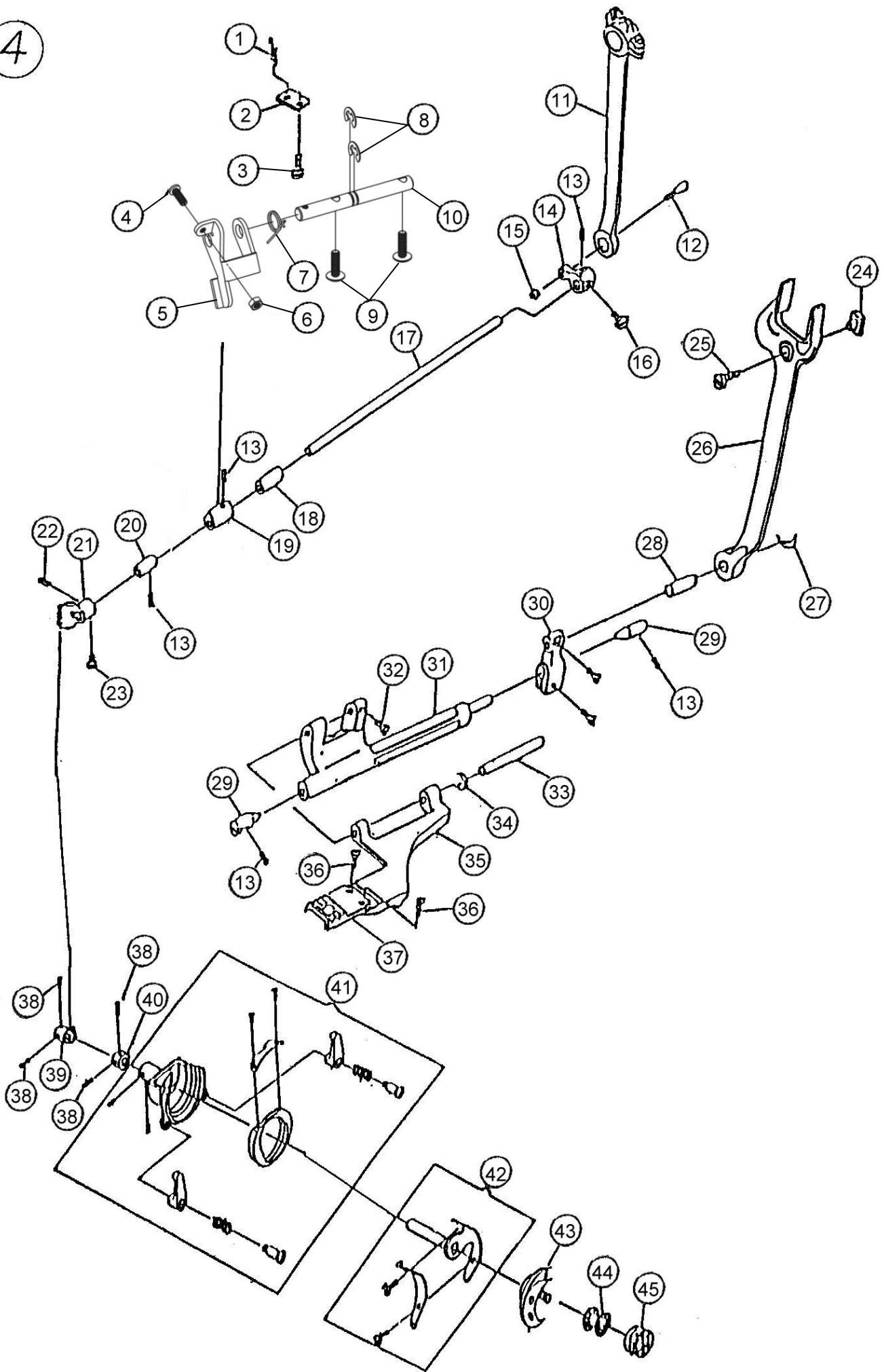
ref no. -----	part no. -----	name of parts -----
01	301083009	THREAD TAKE-UP CRANK
02	000003508	SPRING PIN 4*20
03	301084000	SET SCREW
04	301068008	SET SCREW 20
05	250002003	FRONT BUSHING
06	250004005	FRONT BUSHING BRACKET
07	301008000	SET SCREW
08	301086002	NYLON WASHER
09	301340306	COLLAR
10	301046000	SET SCREW
11	301093002	UPPER SHAFT SET SCREW
12	280139003	WORM GEAR
13	370504005	SELECT CAM COMP
14	220001009	UPPER SHAFT
15	250005006	REAR BUSHING BRACKET
16	000000907	E RING UPPER SHAFT
17	250002003	FRONT BUSHING
18	220002000	MOTOR BELT
19	220004002	WHEEL TRANSPORT PLATE
20	220008006	BALANCE PLATE
21	000011222	SET SCREW
22	220005003	TRANSPORT PIN
23	220003001	HAND WHEEL
24	000016032	SCREW
25	250087002	SET SCREW
26	220006004	CLUTCH BUTTON
27	220007005	WHEEL COVER
28	610100000	SPRING
29	301544003	TAKE-UP LEVER CAMP
30	280043009	ZIGZAG CONNECTING SHAFT
31	255004000	SCREW
32	280042008	Z/Z CRANK SHAFT
33	280044000	SPRING
34	270230004	ZIGZAG MECHANISM
35	280068000	FRONT/REAR SELECTING ROD
36	000000206	SNAP RING 4D
37	610013005	SPRING
38	280069001	FR SELECTING ROD COMP.
39	270173008	FRONT/REAR ADJUST PLATE
40	000016009	SCREW
41	000000804	2.5D E RING
42	280070005	FRONT/REAR CONNECTING ROD
43	301100003	SET SCREW
44	301503000	NEEDLE HOLDER
45	370163101	COLLAR
46	270169001	NEEDLE BAR PLATE
47	220028002	SUPPORTER
48	000012326	RING
49	301245001	WASHER
50	301016001	SET SCREW
51	301045009	ECCENTRIC PIN
52	380080001	SPRING
53	000000309	SNAP RING 5D
54	250089004	NEEDLE BAR SUPPORTER 3
55	370147006	SPRING
56	260042006	NEEDLE BAR
57	260502009	NEEDLE CLAMP COMP
58	301244000	NEEDLE
59	280049108	FRONT/REAR MOVED SHAFT
60	610118001	SPRING
61	280050009	BUTTONHOLE LEVER ROD
62	000000402	SNAP RING 6D
63	000003265	SPRING PIN
64	280051000	BUTTONHOLE BUTTON
65	610276101	BUTTONHOLE OPERATING STICKER
66	220030007	NEEDLE BAR STOPPING PLATE
67	301245001	WASHER
68	301049003	SET SCREW
69	290026007	SPRING
70	301252001	GUIDE BRACKET
71	301087003	SET SCREW
72	301061001	PRESSER BAR
73	280099000	PRESSURE SHAFT
74	280071006	PRESSURE SHAFT PLATE
75	370154006	PRESSER BAR LIFTER
76	230010002	TENSION RELEASE LEVER *A
77	301522005	PRESSER FOOT HOLDER
78	353012008	ZIGZAG PRESSER FOOT
79	610012004	SCREW
80	610296004	FINGER PROTECTOR

3



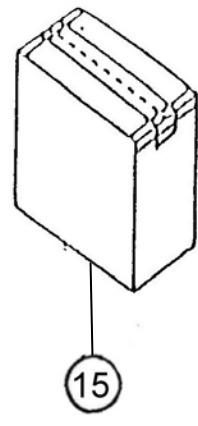
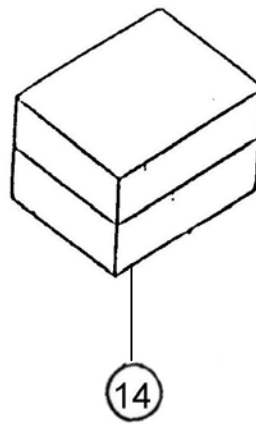
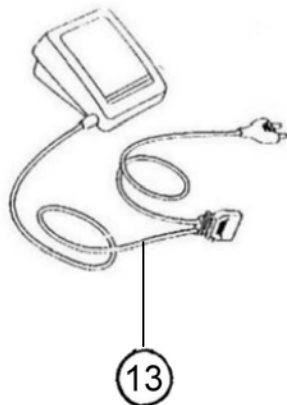
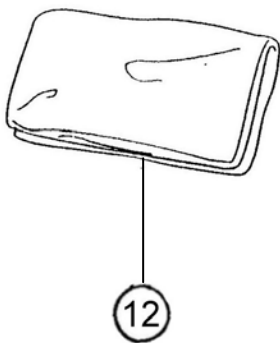
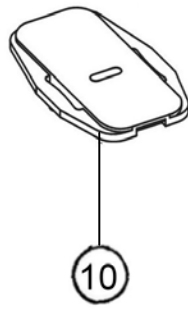
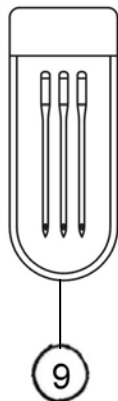
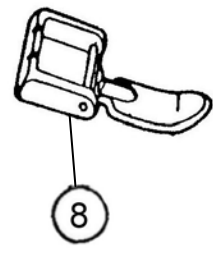
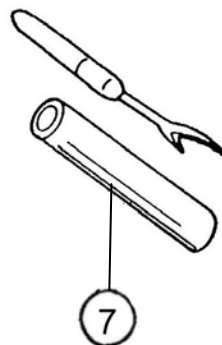
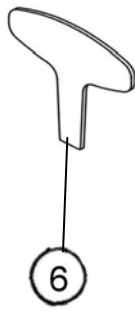
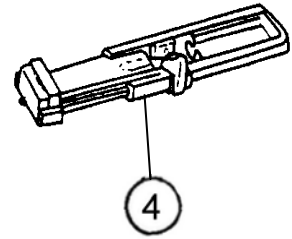
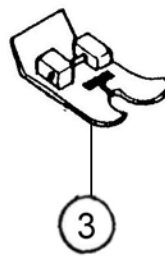
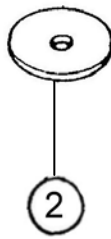
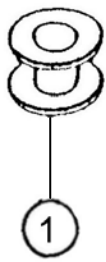
ref no. ---	part no. -----	name of parts -----
01	270227008	ZIGZAG ADJUSTING SHAFT
02	255004000	SCREW
03	230063000	SUPPORTING PIN
04	353127007	WASHER
05	270228009	"O" ADJUSTING CRANK
06	270229000	ZIGZAG DIAL
07	000012315	SNAP PING 5D
08	270233085	ZIGZAG DIAL INDICATED PLATE
09	250131002	WAVE WASHER
10	000012304	SNAP PING 6D
11	301008000	SET SCREW
12	301151009	NUT
13	301196006	SET SCREW
14	301245001	WASHER
15	000000103	SNAP RING 3D
16	280067009	ZIGZAG SHAFT
17	301201005	SET SCREW
18	xxxxxxxxx	PATTERN (DRAWING)
19	270635209	PATTERN MECHANISM COMP
20	260027027	SELECT DIAL
21	370048006	HINGED SCREW
22	xxxxxxxxx	SELECT DIAL PANEL
23	000006316	"S" RING
24	000014018	WASHER
25	610100000	SPRING
26	280004008	S.S ADJUST PIN
27	000055000	NUT
28	280003007	STRECH STITCH PLATE
29	280137001	ADJUST SPRING
30	000008042	ADJUST SCREW
31	000055000	NUT
32	280001005	ADJUST PLATE
33	250081202	LENGTH DIAL
34	301152000	FEED REGULATOR SHAFT
35	280138002	LEVER SPRING
36	250076008	WASHER
37	280002006	ADJUST PLATE
38	000014373	WASHER
39	301046000	SET SCREW
40	301153104	COLLAR
41	000034003	SET SCREW
42	301087003	SET SCREW
43	270034006	CONNECTING PIN
44	270025107	FEED CONNECTING ROD
45	270014000	HINGED SCREW
46	270606201	STITCH LENGTH DIAL
47	270308141	REVERSE BUTTON
48	270033005	SPRING
49	270026005	FEED CONNECTING ROD 26
50	xxxxxxxxx	STITCH DIAL
51	000004015	NUT
52	000014007	WASHER
53	280801003	LIGHT CORD
54	650816103	LIGHT BULB
55	301285106	BELT
56	230813003	MOTOR COMP.
57	000003807	SPRING PIN 2*14
58	301555007	MOTOR WHEEL COMP.
59	000000103	SNAP RING 3D
60	260025003	MOTOR BRACKET
61	450063008	SPRING WASHER
62	301143008	SET SCREW
63	260050007	INSULATED PLATE
64	351047006	BAND
65	260026015	SWITCH FIXED PLATE
66	000063034	RECEPTACLE
67	250831009	SWITCH COMP.
68	000063001	SCREW

4



ref no. ---	part no. -----	name of parts -----
01	301181008	FEED DOG BASE SPRING
02	301197007	SPRING HOLDER
03	301185002	SET SCREW
04	220012003	SET SCREW
05	220011002	DROP FEED CRANK
06	301151009	NUT
07	301195005	SPRING
08	000000309	SNAP RING 5D
09	250010004	SET SCREW
10	220010001	UP/DOWN SHAFT
11	301512002	CRANK ROD COMP
12	301106009	TAPER SCREW
13	301087003	SET SCREW
14	303073002	LOWER SHAFT BRACKET
15	301107000	NUT
16	353015001	SCREW
17	301109002	LOWER SHAFT
18	301110006	LOWER SHAFT FRONT BUSHING
19	301182102	FEED LIFTING CAM
20	301111100	LOWER SHAFT REAR BUSHING
21	301113009	OSCILLATING SHAFT GEAR
22	301115001	SET SCREW
23	301114000	SET SCREW
24	301147002	FORKED ROD SLIDE BLOCK
25	301146001	FORKED ROD SLIDE BLOCK DRAFT
26	301145000	FORKED ROD
27	000000402	SNAP RING 6D
28	301179003	CONNECTING PIN
29	301241007	CENTER PIN B
30	303505008	FEED ROCK CRANK
31	301171005	FEED ROCK SHAFT
32	301131003	SET SCREW
33	301173007	FEED DOG BASE SHAFT
34	000000206	SNAP RING 4D
35	301172006	FEED DOG BASE
36	301175009	SET SCREW
37	301174008	FEED DOG
38	301046000	SET SCREW
39	301130105	BEVEL GEAR
40	301129101	COLLAR
41	301542207	HOOK RACE BODY COMP.
42	301541000	HOOK RACE SHAFT COMP.
43	301132406	HOOKPANEL
44	610081004	BOBBIN
45	301515304	BOBBIN CASE

5



ref no. ---	part no. -----	name of parts -----
01	610081004	BOBBIN
02	301403009	FELT
03	610404007	ZIGZAG PRESSER FOOT
04	303401003	BUTTONHOLE FOOT
05	301439004	SCREW DRIVER
06	660403001	SCREW DRIVER
07	303403201	BUTTONHOLE KNIFE
08	301438003	ZIPPER FOOT
09	270660708	NEEDLE BAG COMP.
10	220401003	FEED COVER PLATE
11	xxxxxxxxxx	INSTRUCTION MANUAL
12	353435805	DUST COVER
13	230814004	CONTROLLER COMP (230V)
14	270310009	POLYFOAM COMP
15	xxxxxxxxxx	CARTON



HSM-2722

高林股份有限公司 KAULIN MFG. CO., LTD.

The specification and/or appearances of the equipment described in this instruction book are subject to change because of modification without previous notice.